

Astaro Command Center 3:3.000

Virtual Appliance Readme

Date: 2011-10-17 04:11 UTC

The specifications and information in this document are subject to change without notice. Companies, names, and data used in examples herein are fictitious unless otherwise noted. This document may not be copied or distributed by any means, in whole or in part, for any reason, without the express written permission of Astaro AG. Translations of this original manual must be marked as follows: "Translation of the original manual".

© 2000–2011 Astaro GmbH & Co. KG – a Sophos company. All rights reserved.

Amalienbadstrasse 42/Bau 52, 76227 Karlsruhe, Germany

<http://www.astaro.com/>

Astaro Security Gateway, Astaro Mail Gateway, Astaro Web Gateway, Astaro Command Center, Astaro Gateway Manager, and WebAdmin are trademarks of Astaro AG. Cisco is a registered trademark of Cisco Systems Inc. All further trademarks are the property of their respective owners.

Limited Warranty

No guarantee is given for the correctness of the information contained in this document. Please send any comments or corrections to <documentation@astaro.com>.

Table of Contents

Overview	1
Installation	1
Important Note on Root Password	1
Installation of Desktop Products	2
Installing VMware Player	2
Installing VMware Workstation	4
Installation of Datacenter Products	6
Installing VMware Server 2.0	6
Configuring VMware Server 2.0	8
Installing ESX 4(i)	10
Recommended Reading	12
Support	13

Overview

Welcome! This Readme is about how to get Astaro Command Center V3 (ACC V3) running as a virtual appliance in any VMware virtualization product.

You can download the ACC Virtual Appliance image from <http://www.astaro.com/download/acc>. New customers are requested to fill out the registration form. Already registered users can directly download the virtual appliances from one of the following locations:

- ftp://ftp.astaro.com/pub/ACC/v3/virtual_appliance/

Astaro Command Center comes with a free license.

Once Astaro Command Center virtual appliance is installed and running, please refer to the ACC V3 Administration Guide or the online help for further usage information, both of which are included in Astaro Command Center.

Installation

Have any VMware virtualization product installed. Supported VMware virtualization software is:

- VMware ESX 4
- VMware ESXi 4
- VMware Player
- VMware Workstation
- VMware Server 2.0

If you just want to glance at ACC Virtual Appliance to get a first impression of what ACC really does, we recommend using VMware Player for its ease-of-use. However, if you are considering using ACC Virtual Appliance in a production environment, or if you would like to conduct performance or load testing with ACC, we recommend using VMware ESX/ESXi, because its network performance is much better.

Download the ACC Virtual Appliance image from <http://www.astaro.com/download/acc>. If you are using VMware ESX/i, make sure to get one of the ESX optimized images for ESX Server.

- For all supported Desktop Products please use: `acc-3.000-vmware.zip`
- For all supported Datacenter Products please use: `acc-3.000-ESX-v4.zip`

Important Note on Root Password

By default, there is no root password set by Astaro. The proper way to set the command line passwords and enable SSH functionality is via WebAdmin under *Management >> System Settings*, on the *Shell Access* tab. However, if this has not been done and a login directly at the console is tried for root, specify any password, and you will then be prompted to set this password by confirming it again. From there, root access will be granted. Note that this happens only the first time a direct console login is performed, and if the root password is then later specified from the WebAdmin GUI,

it will overwrite the previously manually set password.

Installation of Desktop Products

Installing VMware Player

1. **Unzip your downloaded package in your self-defined VMachines directory.**
2. **Start the VMware Player, open the image and boot it.**

System boot was successful when you hear five beeps in a row. In addition, the command-line login screen appears (see Figure 1).

ACC has a network interface card pre-configured as *eth0*, whose IP address is 192.168.0.1 by default.

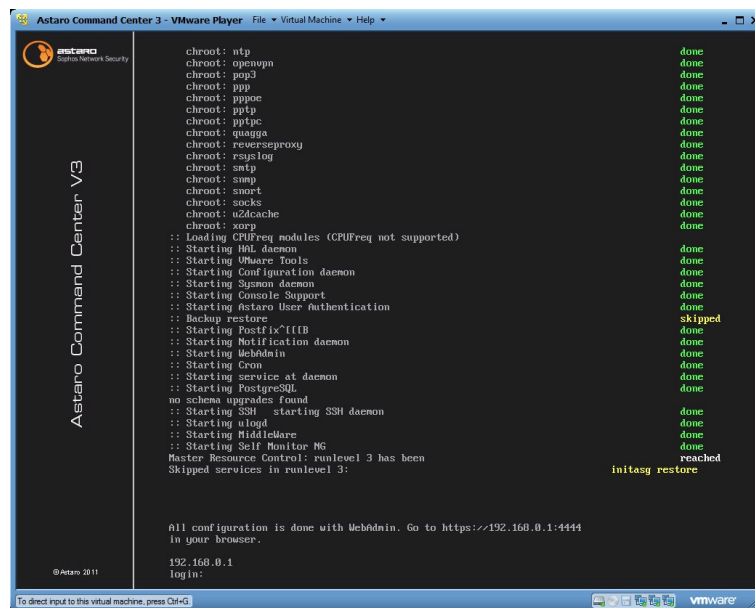


Figure 1 ACC Virtual Appliance Login Screen as Displayed in VMware Player

3. **Configure your VMnet8 network adapter with the IP address 192.168.0.2 and the subnet 255.255.255.0.**
4. **To edit the network connections, click *Start >> Control Panel* and then double-click *Network Connections*.**
5. **Select *VMware Network Adapter VMnet8* and change its IP address to 192.168.0.2 (see Figure 2).**
6. **Point your browser to <https://192.168.0.1:4444>, accept the SSL certificate, and you are ready to go.**

From here on, configuring Astaro Command Center Virtual Appliance is like working with any Astaro Command Center.

The first time you start ACC's web frontend (called *WebAdmin*), the initial setup page will open

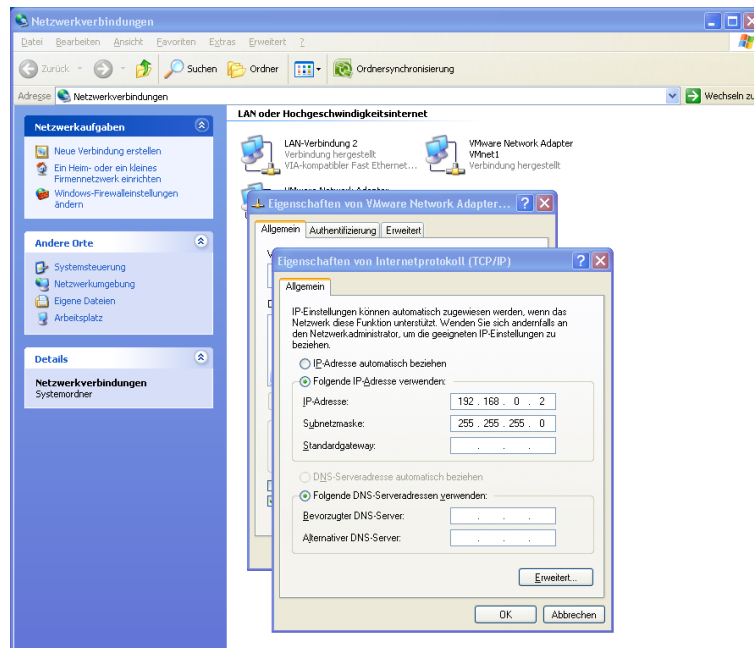


Figure 2 Configuring VMware Network Adapter VMnet8

Figure 3 Initial Setup Screen of WebAdmin

(see Figure 3).

7. Enter accurate information of your company in the text boxes presented here. In addition, specify a password and valid e-mail address for the administrator account.
8. Click **Perform Basic System Setup** to continue logging in.
The login page appears.
9. Type **admin** in the **Username** field and enter the password you have specified on the previous screen.
After logging in, the Dashboard of WebAdmin appears, providing you with all system status information of the Astaro Command Center unit.
Astaro Command Center V3 comes with an essential license including all base level components

of ACC at no cost for home users for personal, non-commercial, and non-revenue generating use.

Installing VMware Workstation

1. **Unzip your downloaded package in your self-defined VMachines directory.**
2. **Start your VMware Workstation and open the image** (see Figure 4).
The virtual ACC appliance has three preconfigured network interfaces, which are set to **bridged** mode.

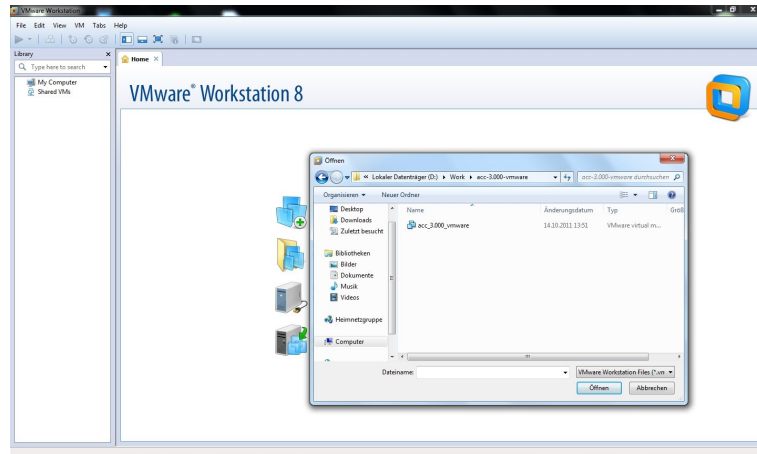


Figure 4 Open ACC Virtual Appliance in VMware Workstation

3. **Customize this setting so that it fits your environment and needs** (see Figure 5).

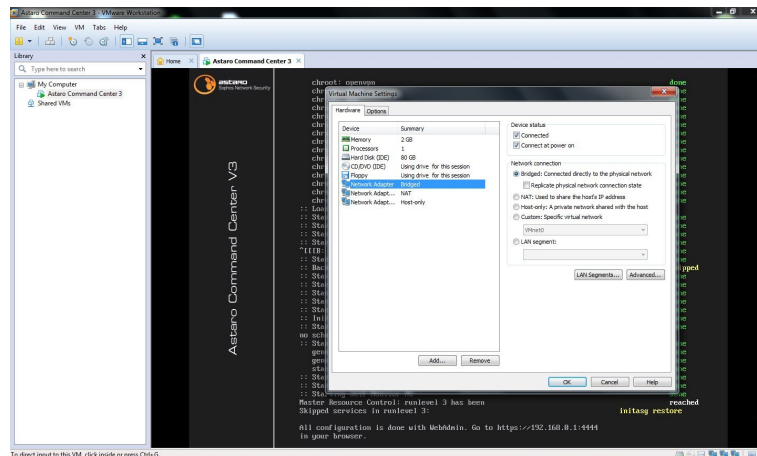


Figure 5 How to change ACC virtual appliance in VMware Workstation

System boot was successful when you hear five beeps in a row and when the command-line login screen appears (see Figure 6).

ACC has a network interface card pre-configured as eth0, whose IP address is 192.168.0.1 by default.

4. **Configure your VMnet8 network adapter with the IP address 192.168.0.2 and the subnet 255.255.255.0.**

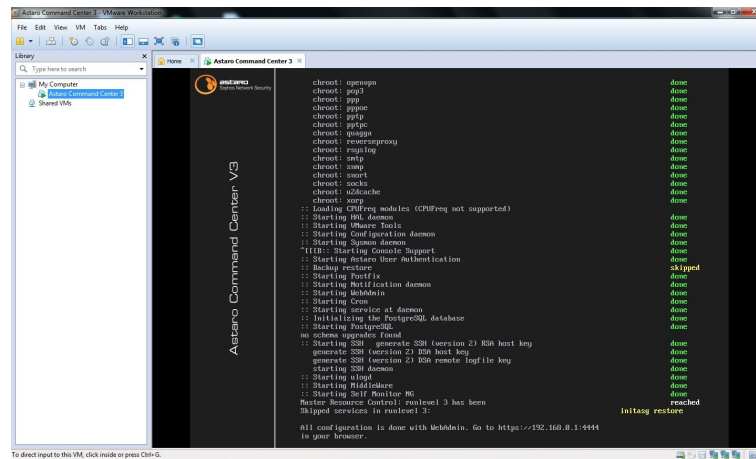


Figure 6 ACC Virtual Appliance Login Screen as Displayed in VMware Workstation

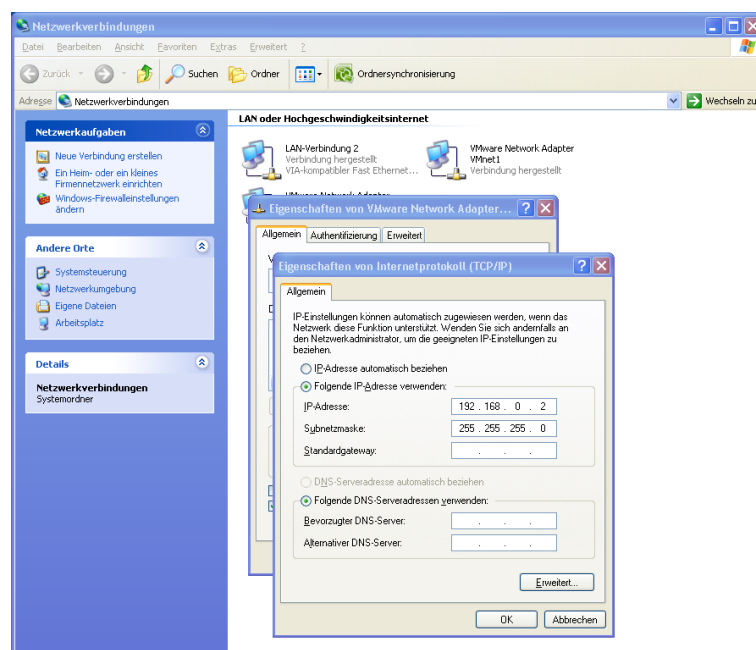
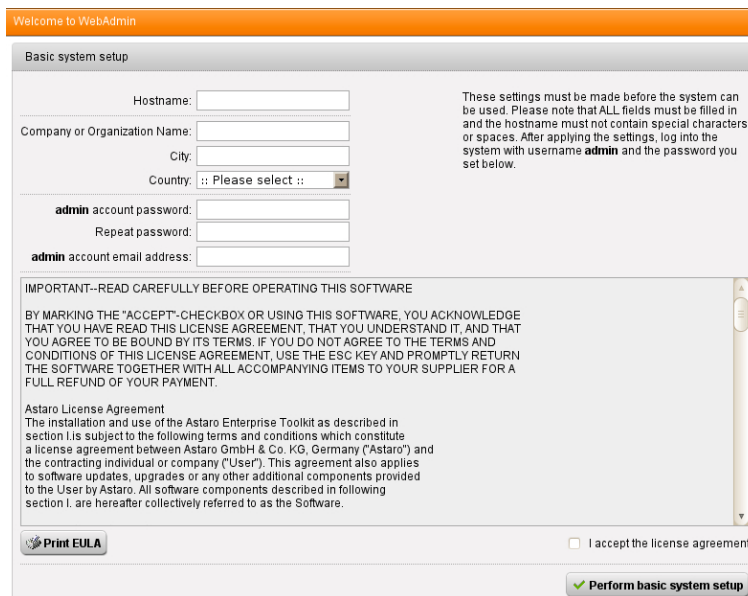


Figure 7 Configuring VMware Network Adapter VMnet8

In Windows, this can be done in the *Network Connections* menu:

1. Click **Start >> Control Panel** and then double-click **Network Connections**.
 2. Select **VMware Network Adapter VMnet8** and change its IP address to 192.168.0.2 (see Figure 7).
 5. Point your browser to <https://192.168.0.1:4444>, accept the SSL certificate, and you are ready to go.
- From here on, configuring Astaro Command Center Virtual Appliance is like working with any Astaro Command Center.
- The first time you start ACC's web frontend (called *WebAdmin*), the initial setup page will open (see Figure 8).
6. Enter accurate information of your company in the text boxes presented here. In addition, specify a password and valid e-mail address for the administrator account.



The screenshot shows the 'Welcome to WebAdmin' initial setup screen. It features a title bar with the text 'Welcome to WebAdmin'. Below it, the 'Basic system setup' section contains several input fields: 'Hostname', 'Company or Organization Name', 'City', 'Country' (a dropdown menu), 'admin account password', 'Repeat password', and 'admin account email address'. To the right of these fields, a note states: 'These settings must be made before the system can be used. Please note that ALL fields must be filled in and the hostname must not contain special characters or spaces. After applying the settings, log into the system with username **admin** and the password you set below.' Below the input fields is a scrollable area containing the 'Astaro License Agreement'. At the bottom left is a 'Print EULA' button, and at the bottom right is a checkbox labeled 'I accept the license agreement'. A green 'Perform basic system setup' button is located at the bottom right of the form.

Figure 8 Initial Setup Screen of WebAdmin

7. Click the **Perform Basic System Setup** button to continue logging in.

The login page appears.

8. Type **admin** in the **Username** field and enter the password you have specified on the previous screen.

After logging in, the Dashboard of WebAdmin appears, providing you with all system status information of the Astaro Command Center unit. Astaro Command Center V3 comes with an essential license including all base level components of ACC at no cost for home users for personal, non-commercial and non-revenue generating use.

Installation of Datacenter Products

Installing VMware Server 2.0

Since VMware Server 2.0 uses the Virtual Infrastructure Client for management too, there are two different possibilities to import a virtual ACC appliance, **A** (manually) and **B** (automatically).

A. Manually adding the image to the vmachines directory.

1. Unzip your downloaded package in your self defined VMachines directory.
2. Open the Infrastructure Client and log in to the management interface of VMware Server 2.0.
3. Go to the datastore section and select the datastore, where your virtual ACC is located.
4. Open this datastore with a double click and change into the directory of your Virtual ACC.
5. Right-click the VMX file of your ACC and select **Add to Inventory** from the context menu (see Figure 9).

The VMware *Add to Inventory Wizard* will be opened.

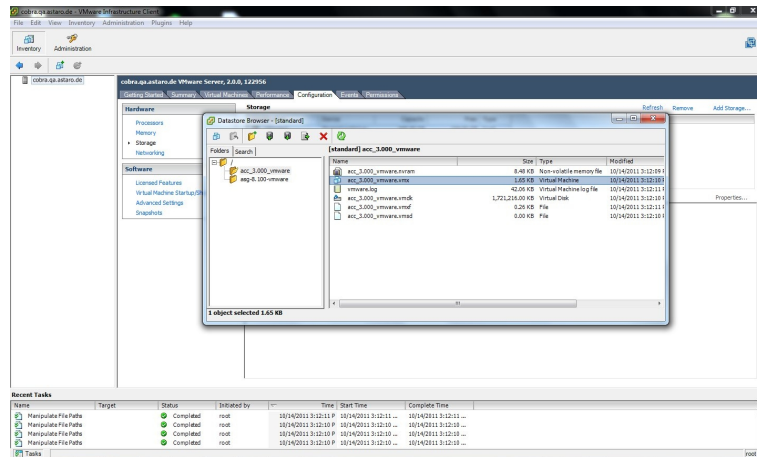


Figure 9 Add to Inventory

6. Enter a name for the ACC (see Figure 10).

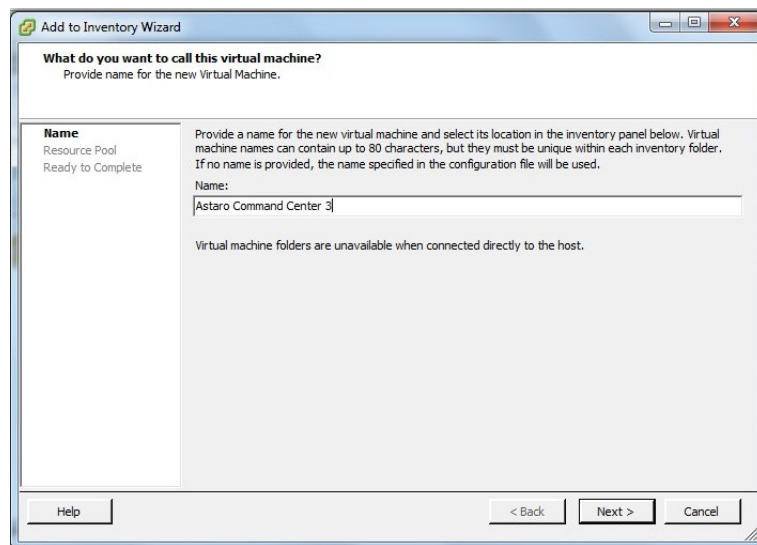


Figure 10 Name the Virtual Machine

7. Select your server (see Figure 11).

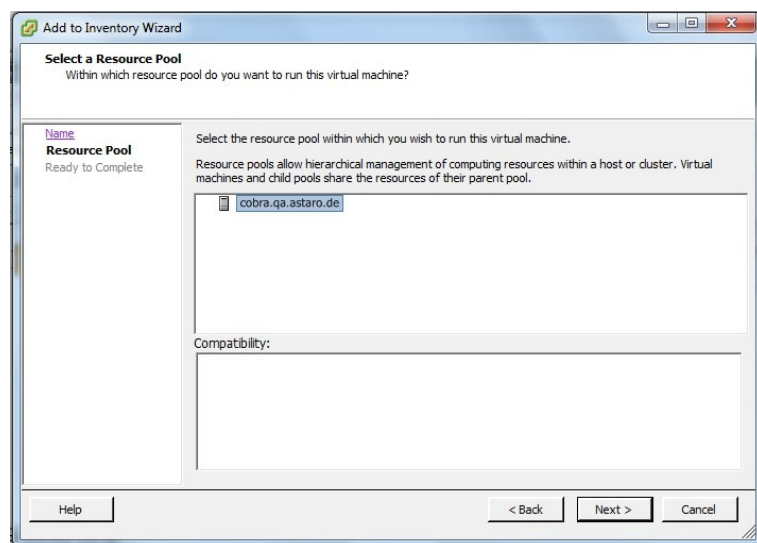


Figure 11 Select the Server

8. Click **Finish** to finish the **Add to Inventory Wizard** (see Figure 12).

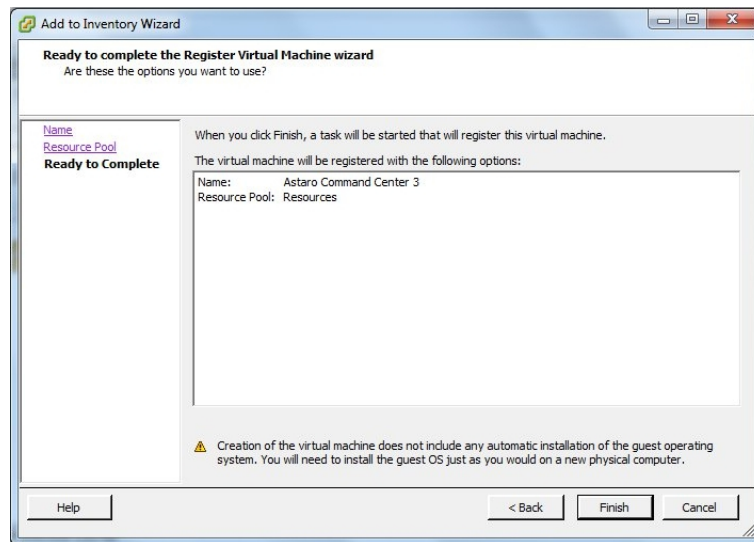


Figure 12 Finish the Wizard

9. Continue the configuration like described in the section below.
- B. Automatically adding the image to the VMachines directory.
1. Unzip your downloaded package to any directory.
 2. Open the *Infrastructure Client* and log in to the management interface of VMware Server 2.0.
 3. Go to datastore section and select your datastore, where you want to store the virtual ACC.
 4. Open this datastore with a double click.
 5. Click the button *Upload Folder* and select the folder of your unzipped ACC (see Figure 13).

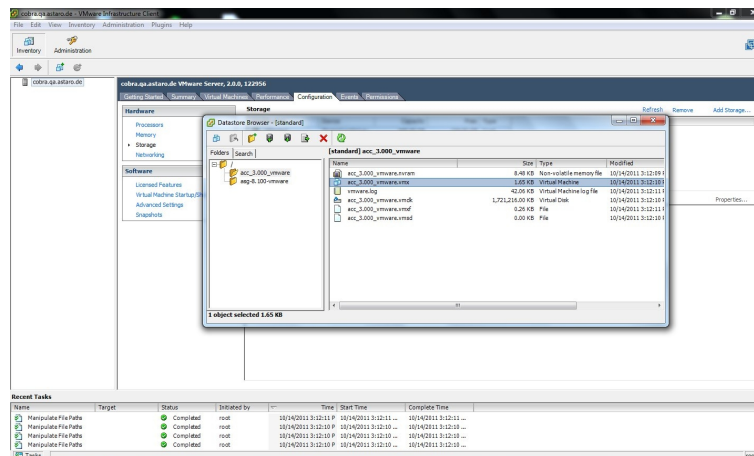


Figure 13 Datastore Browser

An upload dialog window appears and uploads your virtual ACC. (see Figure 14)

6. Follow the steps 4 to 9 of the "A" section above.

Configuring VMware Server 2.0

(Both A and B)

The virtual ACC appliance has three pre-configured network interfaces, which are set to **bridged**

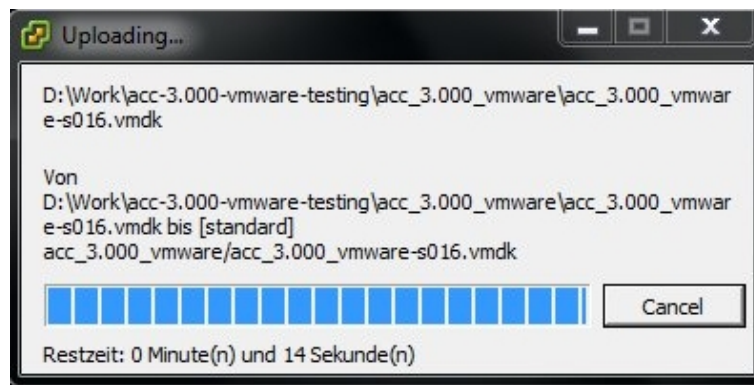


Figure 14 Upload of ACC

mode.

1. **Customize this setting so that it fits your environment.**
2. **Start the virtual ACC and open the Virtual Console to watch the boot process.**
System boot was successful when you hear five beeps in a row and when the command-line login screen appears (see Figure 16).
ACC has a network interface card pre-configured as eth0, whose IP address is 192.168.0.1 by default.

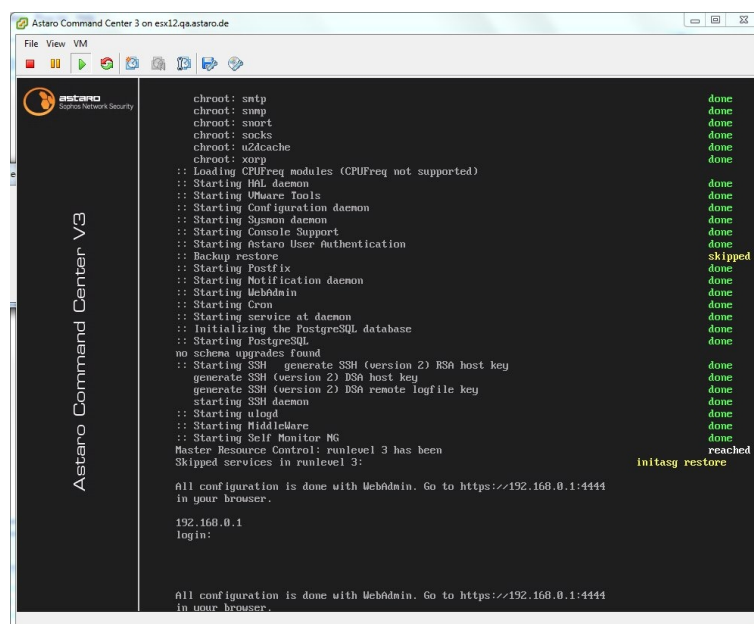
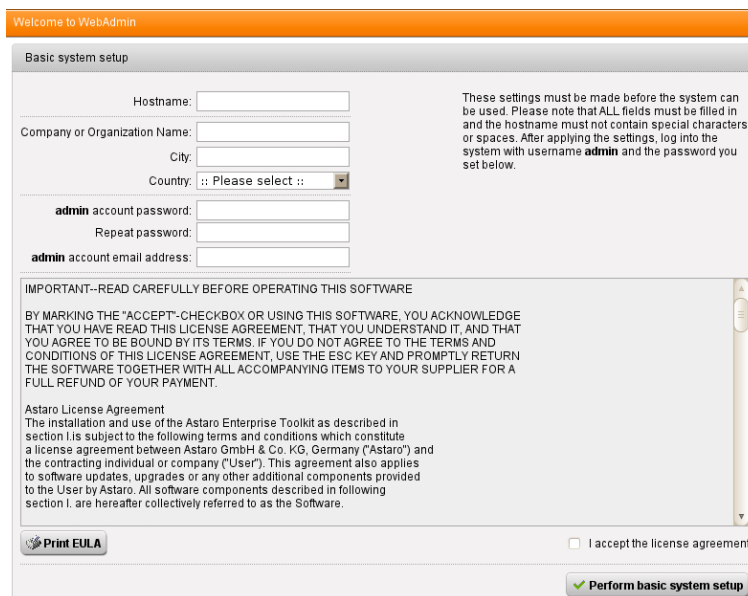


Figure 15 Command Line after Boot

3. **If you have VMware Server 2.0 installed on a Microsoft Windows Host, please follow the steps 4 to 8 at *Installing VMware Workstation*.**
Otherwise give another client or notebook the IP address 192.168.0.2 and connect via a web browser to <https://192.168.0.1:4444>.
The first time you start ACC's web frontend (called *WebAdmin*), the initial setup page will open.
4. **Enter accurate information of your company in the text boxes presented here. In addition, specify a password and valid e-mail address for the administrator account (see Figure 17).**



The screenshot shows the 'Welcome to WebAdmin' initial setup screen. It has an orange header bar. Below it, the 'Basic system setup' section contains several input fields: 'Hostname', 'Company or Organization Name', 'City', 'Country' (a dropdown menu), 'admin account password', 'Repeat password', and 'admin account email address'. To the right of these fields is a note: 'These settings must be made before the system can be used. Please note that ALL fields must be filled in and the hostname must not contain special characters or spaces. After applying the settings, log into the system with username **admin** and the password you set below.' Below the input fields is a scrollable area containing the 'Astaro License Agreement'. At the bottom left is a 'Print EULA' button, and at the bottom right is a checkbox labeled 'I accept the license agreement'. A green 'Perform basic system setup' button is located at the bottom right of the form.

Figure 16 Initial Setup Screen of WebAdmin

5. Click the **Perform Basic System Setup** button to continue logging in.
The login page appears.
6. Type **admin** in the **Username** field and enter the password you have specified on the previous screen.
After logging in, the Dashboard of WebAdmin appears, providing you with all system status information of the Astaro Command Center unit. Astaro Command Center V3 comes with an essential license including all base level components of ACC at no cost for home users for personal, non-commercial and non-revenue generating use.

Installing ESX 4(i)

The zip package for VMware ESX 3.5 and ESX 3i contains two virtual machine related files. We use for both architectures the **Open Virtualization Format (OVF)**.

- ACC_3.000.ovf
 - ACC_3.000-disk1.vmdk
1. Unzip your downloaded package to a directory of your choice.
 2. Open the **Infrastructure Client** and log in to the management interface of VMware ESX Server 3.5 or 3i.
 3. From the menu select **File >> Virtual Appliance >> Import**.
The VMware *Import Virtual Appliance Wizard* opens.
 4. Select the option **Import from file**, browse to the folder of your unzipped ACC, select the ACC_3.000.ovf file and click **Next** (see Figure 17).
You get a detailed overview about the appliance.
 5. Click **Next** (see Figure 18).
 6. Enter a name and click **Next** (see Figure 19).
 7. Click **Finish** to start the import (see Figure 20).
An import dialog window appears and displays the import progress (see Figure 21).
After the successful import the virtual ACC appliance has three preconfigured network interfaces,

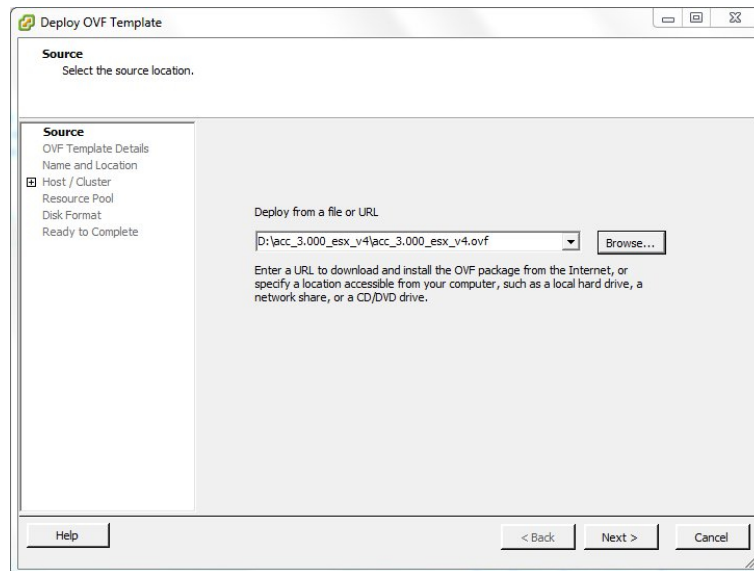


Figure 17 Import from File

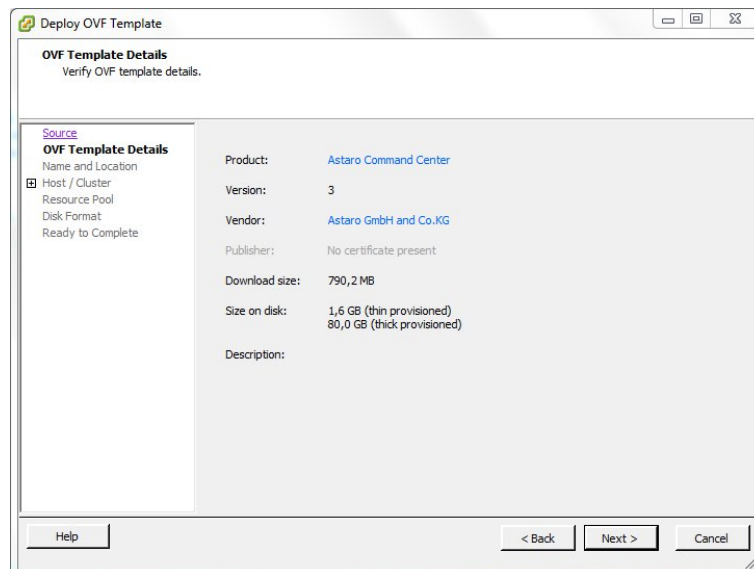


Figure 18 Import Overview

which are set to bridged mode.

8. **Customize this setting according to your environment and needs** (see Figure 22).
9. **Start the virtual ACC and open the Virtual Console to watch the boot process.**
System boot was successful when you hear five beeps in a row and when the command-line login screen appears (see Figure 23).
ACC has a network interface card pre-configured as eth0, whose IP address is 192.168.0.1 by default.
10. **Give a notebook or another client IP address 192.168.0.2 and connect via web browser to https://192.168.0.1:4444.**
The first time you start ACC's web frontend (called *WebAdmin*), the initial setup page will open

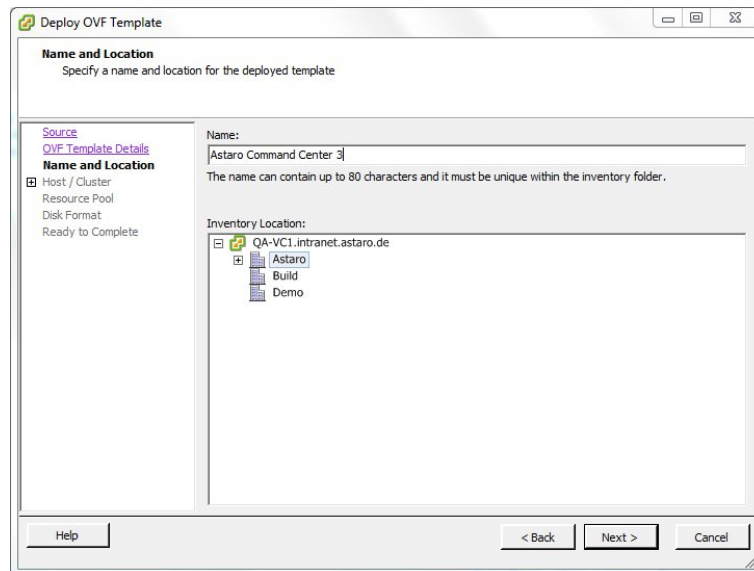


Figure 19 Name the Appliance

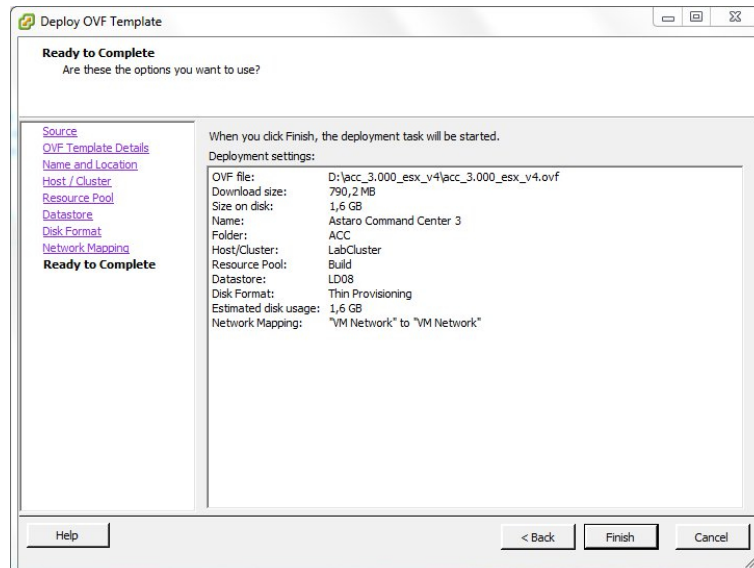


Figure 20 Finish the Import Wizard

(see Figure 24).

11. Enter accurate information of your company in the text boxes presented here. In addition, specify a password and valid e-mail address for the administrator account.
12. Click the *Perform Basic System Setup* button to continue logging in.
The login page appears.
13. Type **admin** in the *Username* field and enter the password you have specified on the previous screen.

After logging in, the Dashboard of WebAdmin appears, providing you with all system status information of the Astaro Command Center unit. Astaro Command Center V3 comes with an essential license including all base level components of ACC at no cost for home users for personal, non-commercial and non-revenue generating use.

Recommended Reading

Once Astaro Command Center virtual appliance is installed and running, please refer to the ACC V3 Administration Guide and online help for further usage information, both of which are included in

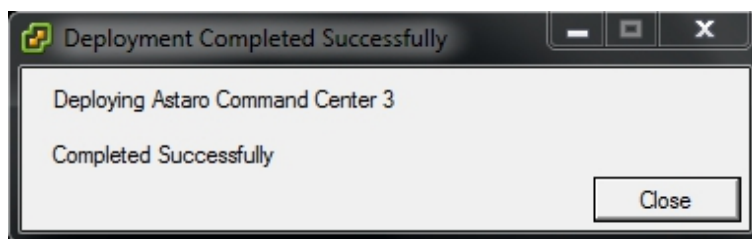


Figure 21 Import Progress Window

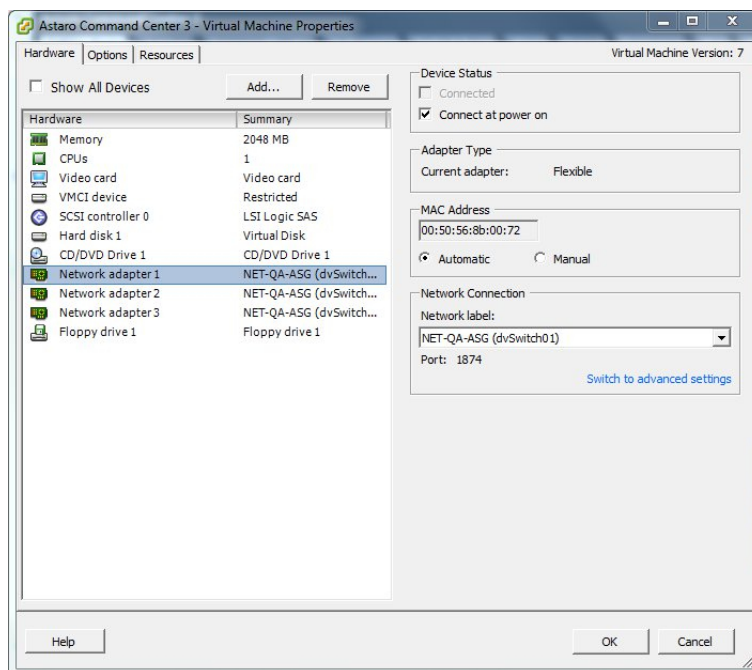


Figure 22 Network Settings of the virtual ACC

Astaro Command Center.

Support

If you run into problems please contact us through http://www.astaro.com/support/contact_support or by writing an email to our Support team¹. Our customer service representatives will be happy to help you.

Finally, we recommend to register at <http://www.astaro.com/download/acc> to obtain a free license for Astaro Command Center or to gain access to latest security and product information.

Enjoy,

Your Astaro Team

¹ <mailto:support@astaro.com>

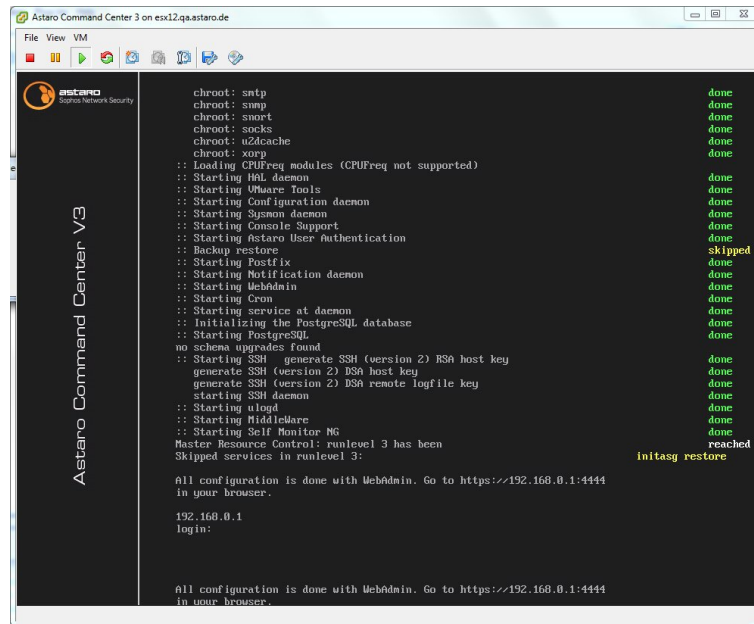


Figure 23 Virtual Console of ACC

Welcome to WebAdmin

Basic system setup

Hostname:

Company or Organization Name:

City:

Country:

admin account password:

Repeat password:

admin account email address:

These settings must be made before the system can be used. Please note that ALL fields must be filled in and the hostname must not contain special characters or spaces. After applying the settings, log into the system with username **admin** and the password you set below.

IMPORTANT--READ CAREFULLY BEFORE OPERATING THIS SOFTWARE

BY MARKING THE "ACCEPT"-CHECKBOX OR USING THIS SOFTWARE, YOU ACKNOWLEDGE THAT YOU HAVE READ THIS LICENSE AGREEMENT, THAT YOU UNDERSTAND IT, AND THAT YOU AGREE TO BE BOUND BY ITS TERMS. IF YOU DO NOT AGREE TO THE TERMS AND CONDITIONS OF THIS LICENSE AGREEMENT, USE THE ESC KEY AND PROMPTLY RETURN THE SOFTWARE TOGETHER WITH ALL ACCOMPANYING ITEMS TO YOUR SUPPLIER FOR A FULL REFUND OF YOUR PAYMENT.

Astaro License Agreement

The installation and use of the Astaro Enterprise Toolkit as described in section I is subject to the following terms and conditions which constitute a license agreement between Astaro GmbH & Co. KG, Germany ("Astaro") and the contracting individual or company ("User"). This agreement also applies to software updates, upgrades or any other additional components provided to the User by Astaro. All software components described in following section I. are hereafter collectively referred to as the Software.

☐ I accept the license agreement

Figure 24 Initial Setup Screen of WebAdmin